

Felidae – Flint Pillow

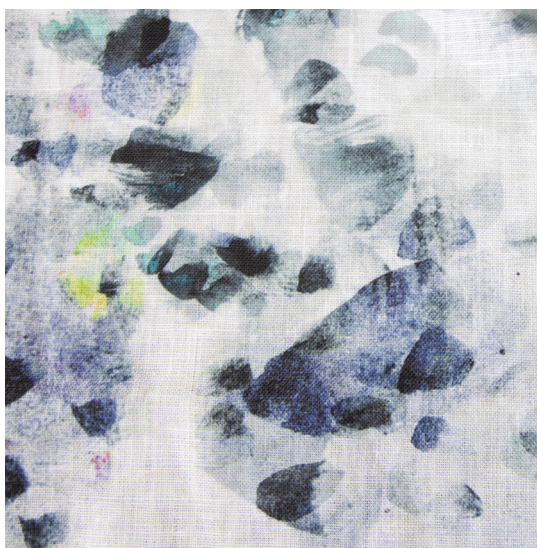
This pattern is available in all of our standard pillow sizes printed on an option of four fabric grounds. All pillows are made per order and take up to 3 weeks to ship. Please be sure to order a fabric sample before purchasing pillows.

Pillows are made to order locally in the North Eastern United States in a small family owned workroom and printed on natural and organic fabrics with digital pigment ink that has absolutely zero run off.

Pillows Pictured:

18" x 32" 100% oyster linen pillow
with 90/10 feather/down insert

Felidae - Flint pillow was made in collaboration with Briana DeVoe White as part of the Dalili Collection.



| | |
|-----------------------|--|
| Enclosure | Knife edge with invisible zipper |
| Insert | Feather/down insert included with all pillows |
| Pillow Sizes | 18"x18", 18"x32", 14"x24", 20"x20", 22"x22", 24"x24" |
| Note on Pillow Sizing | All pillows are measured seam to seam across the belly of the pillow. There can be a discrepancy of .5-1.5" due post print shrinkage, seam fold loss, and to the "tapered corner" technique that we employ to avoid the the dog-ear (pointed corner) look. This technique is a standard in high-end custom drapery workrooms and sizing is consistent with all commercially available standard pillow inserts. |

| | |
|-------------|---|
| Pricing | Price varies based on pillow size and fabric ground; Price includes sham & insert. |
| Sample Size | 8.5" x 11" **If you are unsure of color or fabric choice please order a sample before purchasing. |

| | |
|-----------------------|--|
| Fabric Ground Options | 50/50 linen cotton blend 100% oyster linen 100% heavyweight linen* 100% organic cotton denim *Some darker patterns not available on the 100% heavyweight linen due to print inconsistencies. |
| Print Method | Digital, pigment ink |
| Lead Time | 4-6 weeks **Rush Service subject to availability. Rush fee does not include expedited shipping. |

| | |
|---------------|---|
| Care | Shams can be removed and dry cleaned only. Multiple machine washes may result in fading. Feather down inserts can be machine washed on delicate, do not tumble dry. |
| Color & Scale | We always strive for color accuracy but please note that colors shown on the website are a representation only. Please refer to the actual product sample. |
| Made In | USA |